

EUROPE (RUMELİ)

ASIA (ANADOLU)

96. Sarnıcı Restaurant / E5
 97. Gülhane Park Cistern / E4
 98. Anika Hotel Cistern / E5
 99. Zeyrek Cistern / C4
 100. Seferihisar Cistern / C3
 101. İçkapı Bodrum Cistern / B3
 102. Kırması Cistern / C3
 103. Sultan Cistern / C3

• **Byzantine Open-Air Cisterns**
 104. Cistern of Aetius / B3
 105. Cistern of Aspar / B3
 106. Cistern of Moccus / A5

• **Existing Gates of Constantinople**
 107. Ahtışık / E5
 108. Cardaklı (Lion's Gate) / D6
 109. Kuruçay (Kontoklonlar) / D6
 110. Samatya (Pamathia) / A6
 111. Porte Aurea (Golden Gate) / A7
 112. Yeniçeri Kapı / A6
 113. Belgrad Kapı (Yükökerler) / A6
 114. Silivrikapı (Pigei) / A5
 115. Mevlanakapı (Thegiun) / A4
 116. Topkapı (Romanus) / A4
 117. Samatya / A6
 118. Galata Bridge / D4
 119. Beşiktaş Market / F1
 120. Cibali Kapı (Eski Paşası) / C3
 121. Ayakapı (St. Theodosius) / C3

• **Byzantine Columns**
 122. Milion / D5
 123. Column of the Goths / E4
 124. Obelisk of Theodosius / D5
 125. Serpent Column / D5
 126. Masonry Obelisk / D5
 127. Kazıgörmüş Art Gallery & Library (Constantinople) / D5
 128. Forum of Theodosius (Forum Tauri) / C4
 129. Column of Arcadius / B5
 130. Column of Constantine / D5

• **Mosques Converted From Byzantine Churches**
 131. Hagia Sophia / E5
 132. Kariye Çarşı Church / D5
 133. Küküklü Ayasofya Church of St. Sergius and Bacchus / D5
 134. Kariye Çarşı Church / D5
 135. Theotokos Kiriottissa / D5
 136. Molla Zeyrek (Monastery of Christ Pantokrator) / C4
 137. Bodrum / Meşih Paşa (Meydanlı) Church / C5
 138. Atik Mustafa Paşa / B2
 139. Hacı İsmail Paşa / B2
 140. Hacı Mustafa Paşa / B2
 141. Hacı Mustafa Paşa / B2
 142. Hacı Mustafa Paşa / B2
 143. Hacı Mustafa Paşa / B2
 144. Hacı Mustafa Paşa / B2
 145. Hacı Mustafa Paşa / B2
 146. Hacı Mustafa Paşa / B2
 147. Hacı Mustafa Paşa / B2
 148. Hacı Mustafa Paşa / B2
 149. Hacı Mustafa Paşa / B2
 150. Hacı Mustafa Paşa / B2
 151. Hacı Mustafa Paşa / B2
 152. Hacı Mustafa Paşa / B2
 153. Hacı Mustafa Paşa / B2
 154. Hacı Mustafa Paşa / B2
 155. Hacı Mustafa Paşa / B2

• **Byzantine Palaces**
 156. Magnaura Palace / E5
 157. Great Palace Mosaic Museum / D5
 158. Palace of Lausus Ruins / D5
 159. Erenin Sultanahmet Hotel Collections / D5
 160. Buğdaycı Paşa / D6
 161. Yedikule Palace / D5
 162. Hırami Ahmet Paşa (Palace of Porphyrogenitus) / D5
 163. Molla Zeyrek (Monastery of Christ Pantokrator) / C4
 164. Molla Zeyrek (Monastery of Christ Pantokrator) / C4
 165. Molla Zeyrek (Monastery of Christ Pantokrator) / C4
 166. Molla Zeyrek (Monastery of Christ Pantokrator) / C4
 167. Molla Zeyrek (Monastery of Christ Pantokrator) / C4
 168. Molla Zeyrek (Monastery of Christ Pantokrator) / C4
 169. Molla Zeyrek (Monastery of Christ Pantokrator) / C4
 170. Molla Zeyrek (Monastery of Christ Pantokrator) / C4
 171. Molla Zeyrek (Monastery of Christ Pantokrator) / C4
 172. Molla Zeyrek (Monastery of Christ Pantokrator) / C4
 173. Molla Zeyrek (Monastery of Christ Pantokrator) / C4
 174. Molla Zeyrek (Monastery of Christ Pantokrator) / C4
 175. Molla Zeyrek (Monastery of Christ Pantokrator) / C4

123. İzzet Efendi Mosque / B2
 124. Kara Ahmet Paşa Mosque / A3-A4
 125. Sokullu Mehmet Paşa / A3-A4
 126. Aszkaplı Mosque / D3
 127. Kılıç Ali Paşa Mosque / E3
 128. Molla Çelebi (Fındıklı) Mosque / E2
 129. Sinan Paşa Mosque / E1
 130. Miral Sinan Çarşısı / G3
 131. Atilik Valide Sultan Mosque / H4
 132. Fatih Camii / E5

• **Late-Ottoman Imperial Mosques**
 133. Hürka Şerif / B3
 134. Sultanahmet Mosque / C5
 135. Süleymaniye / D5
 136. Nuruosmaniye / D5
 137. Dolmabahçe Bezmialem Valide / F2
 138. Ortaköy (Büyükdere) / H1
 139. Ayvazpaşa / G3
 140. Panayir Camii / A4
 141. Fatih Sultan Mosque / C4
 142. Bayezid Mosque (Bayezid II) / D5
 143. Süleymaniye / D5
 144. Süleymaniye / D5
 145. Süleymaniye / D5
 146. Süleymaniye / D5
 147. Süleymaniye / D5
 148. Süleymaniye / D5
 149. Süleymaniye / D5
 150. Süleymaniye / D5
 151. Süleymaniye / D5
 152. Süleymaniye / D5
 153. Süleymaniye / D5
 154. Süleymaniye / D5
 155. Süleymaniye / D5

• **Other Byzantine Monuments**
 156. Hacı İsmail Paşa / B2
 157. Sokullu Mehmet Paşa / A3-A4
 158. Aszkaplı Mosque / D3
 159. Ortaköy Craft Market / H1
 160. Historia Shopping Mall / B4
 161. Tilled Pavilion / E2
 162. Ortaköy Railway Station (Orient Express) / D4
 163. St. Anthony of Padua / D2
 164. St. George / D3
 165. Church of St. Peter & Paul / D3
 166. Santa Maria Draperies / D2
 167. Balkapan Han / D4
 168. Topkapı / A4
 169. Mimar Sinan / G3
 170. Süleymaniye / D5
 171. Süleymaniye / D5
 172. Süleymaniye / D5
 173. Süleymaniye / D5
 174. Süleymaniye / D5
 175. Süleymaniye / D5
 176. Süleymaniye / D5
 177. Süleymaniye / D5
 178. Süleymaniye / D5
 179. Süleymaniye / D5
 180. Süleymaniye / D5
 181. Süleymaniye / D5
 182. Süleymaniye / D5
 183. Süleymaniye / D5
 184. Süleymaniye / D5
 185. Süleymaniye / D5
 186. Süleymaniye / D5
 187. Süleymaniye / D5
 188. Süleymaniye / D5
 189. Süleymaniye / D5
 190. Süleymaniye / D5
 191. Süleymaniye / D5
 192. Süleymaniye / D5
 193. Süleymaniye / D5
 194. Süleymaniye / D5
 195. Süleymaniye / D5

221. Vezir Han / D5
 222. Gülhane Park / D5
 223. Government's Office / D4
 224. Proessions (Alay) Pavilion / D4
 225. Gülhane Park / E4
 226. Imperial Mini / E4
 227. Tilled Pavilion / E2
 228. Ortaköy Railway Station (Orient Express) / D4
 229. St. Anthony of Padua / D2
 230. Istanbul Chamber of Commerce / D4
 231. Balkapan Han / D4
 232. Topkapı / A4
 233. Süleymaniye / D5
 234. Süleymaniye / D5
 235. Süleymaniye / D5
 236. Süleymaniye / D5
 237. Süleymaniye / D5
 238. Süleymaniye / D5
 239. Süleymaniye / D5
 240. Süleymaniye / D5
 241. Süleymaniye / D5
 242. Süleymaniye / D5
 243. Süleymaniye / D5
 244. Süleymaniye / D5
 245. Süleymaniye / D5
 246. Süleymaniye / D5
 247. Süleymaniye / D5
 248. Süleymaniye / D5
 249. Süleymaniye / D5
 250. Süleymaniye / D5
 251. Süleymaniye / D5
 252. Süleymaniye / D5
 253. Süleymaniye / D5
 254. Süleymaniye / D5
 255. Süleymaniye / D5

• **Meat and Kebap Restaurants**
 256. Baran Et Mangal / D5 (no alcohol)
 257. Hacı Mustafa / D5
 258. Karadeniz Pide Veri / E5
 259. Karadeniz Pide Veri / E5
 260. Karadeniz Pide Veri / E5
 261. Karadeniz Pide Veri / E5
 262. Karadeniz Pide Veri / E5
 263. Karadeniz Pide Veri / E5
 264. Karadeniz Pide Veri / E5
 265. Karadeniz Pide Veri / E5
 266. Karadeniz Pide Veri / E5
 267. Karadeniz Pide Veri / E5
 268. Karadeniz Pide Veri / E5
 269. Karadeniz Pide Veri / E5
 270. Karadeniz Pide Veri / E5
 271. Karadeniz Pide Veri / E5
 272. Karadeniz Pide Veri / E5
 273. Karadeniz Pide Veri / E5
 274. Karadeniz Pide Veri / E5
 275. Karadeniz Pide Veri / E5

• **Fine Dining**
 276. Divan Lokanta / E5
 277. Divan Lokanta / E5
 278. Divan Lokanta / E5
 279. Divan Lokanta / E5
 280. Divan Lokanta / E5
 281. Divan Lokanta / E5
 282. Divan Lokanta / E5
 283. Divan Lokanta / E5
 284. Divan Lokanta / E5
 285. Divan Lokanta / E5
 286. Divan Lokanta / E5
 287. Divan Lokanta / E5
 288. Divan Lokanta / E5
 289. Divan Lokanta / E5
 290. Divan Lokanta / E5
 291. Divan Lokanta / E5
 292. Divan Lokanta / E5
 293. Divan Lokanta / E5
 294. Divan Lokanta / E5
 295. Divan Lokanta / E5

EXPLORE İSTANBUL
 (Where should you start from?)
 1. Topkapı Palace Museum / E4
 2. Ayasofya Mosque (Hagia Sophia) / E5
 3. Basilica Cistern (Yerebatan Sarayı) / D5
 4. Hippodrome / D5
 5. Blue Mosque / D5
 6. Sultan Ahmed Mosque / D5
 7. Grand Bazaar / D5

If you have more days in Istanbul
 8. Turkish & Islamic Arts Museum / Ibrahim Paşa Palace / D5
 9. Egyptian-Spice Bazaar / D4
 10. Dolmabahçe Palace / F1
 11. Public ferry from Eminönü, Karaköy or Beşiktaş to Üsküdar Or, take the Marmaray (intercontinental Tube) from Sirkeci to Üsküdar / D3-D4-F1 by Architect Sinan / G3
 12. Memnekan Sahil (Cultural Center and Lady Sultan's Museum) / G3
 13. Maiden's Tower (Boat from the Üsküdar shore) / F3
 14. Kuzuncubasi Neighborhood / H2
 15. Beşiktaş / H1
 16. Nakkasapace Gardens / H1
 17. Çarşı / H1
 18. Çarşı / H1
 19. Çarşı / H1
 20. Çarşı / H1
 21. Çarşı / H1
 22. Çarşı / H1
 23. Çarşı / H1
 24. Çarşı / H1
 25. Çarşı / H1
 26. Çarşı / H1
 27. Çarşı / H1
 28. Çarşı / H1
 29. Çarşı / H1
 30. Çarşı / H1
 31. Çarşı / H1
 32. Çarşı / H1
 33. Çarşı / H1
 34. Çarşı / H1
 35. Çarşı / H1
 36. Çarşı / H1
 37. Çarşı / H1
 38. Çarşı / H1
 39. Çarşı / H1
 40. Çarşı / H1
 41. Çarşı / H1
 42. Çarşı / H1
 43. Çarşı / H1
 44. Çarşı / H1
 45. Çarşı / H1
 46. Çarşı / H1
 47. Çarşı / H1
 48. Çarşı / H1
 49. Çarşı / H1
 50. Çarşı / H1
 51. Çarşı / H1
 52. Çarşı / H1
 53. Çarşı / H1
 54. Çarşı / H1
 55. Çarşı / H1
 56. Çarşı / H1
 57. Çarşı / H1
 58. Çarşı / H1
 59. Çarşı / H1
 60. Çarşı / H1
 61. Çarşı / H1
 62. Çarşı / H1
 63. Çarşı / H1
 64. Çarşı / H1
 65. Çarşı / H1
 66. Çarşı / H1
 67. Çarşı / H1
 68. Çarşı / H1
 69. Çarşı / H1
 70. Çarşı / H1
 71. Çarşı / H1
 72. Çarşı / H1
 73. Çarşı / H1
 74. Çarşı / H1
 75. Çarşı / H1
 76. Çarşı / H1
 77. Çarşı / H1
 78. Çarşı / H1
 79. Çarşı / H1
 80. Çarşı / H1
 81. Çarşı / H1
 82. Çarşı / H1
 83. Çarşı / H1
 84. Çarşı / H1
 85. Çarşı / H1
 86. Çarşı / H1
 87. Çarşı / H1
 88. Çarşı / H1
 89. Çarşı / H1
 90. Çarşı / H1
 91. Çarşı / H1
 92. Çarşı / H1
 93. Çarşı / H1
 94. Çarşı / H1
 95. Çarşı / H1
 96. Çarşı / H1
 97. Çarşı / H1
 98. Çarşı / H1
 99. Çarşı / H1
 100. Çarşı / H1
 101. Çarşı / H1
 102. Çarşı / H1
 103. Çarşı / H1
 104. Çarşı / H1
 105. Çarşı / H1
 106. Çarşı / H1
 107. Çarşı / H1
 108. Çarşı / H1
 109. Çarşı / H1
 110. Çarşı / H1
 111. Çarşı / H1
 112. Çarşı / H1
 113. Çarşı / H1
 114. Çarşı / H1
 115. Çarşı / H1
 116. Çarşı / H1
 117. Çarşı / H1
 118. Çarşı / H1
 119. Çarşı / H1
 120. Çarşı / H1
 121. Çarşı / H1
 122. Çarşı / H1
 123. Çarşı / H1
 124. Çarşı / H1
 125. Çarşı / H1
 126. Çarşı / H1
 127. Çarşı / H1
 128. Çarşı / H1
 129. Çarşı / H1
 130. Çarşı / H1
 131. Çarşı / H1
 132. Çarşı / H1
 133. Çarşı / H1
 134. Çarşı / H1
 135. Çarşı / H1
 136. Çarşı / H1
 137. Çarşı / H1
 138. Çarşı / H1
 139. Çarşı / H1
 140. Çarşı / H1
 141. Çarşı / H1
 142. Çarşı / H1
 143. Çarşı / H1
 144. Çarşı / H1
 145. Çarşı / H1
 146. Çarşı / H1
 147. Çarşı / H1
 148. Çarşı / H1
 149. Çarşı / H1
 150. Çarşı / H1
 151. Çarşı / H1
 152. Çarşı / H1
 153. Çarşı / H1
 154. Çarşı / H1
 155. Çarşı / H1

Or, take the Marmaray

Delicious İSTANBUL

CULINARY CITY PLAN with ILLUSTRATIONS



GTD GÖRÜŞMEK İÇİN
KÜLTÜR VE TURİZM BAKANLIĞI
Turkey Discover the potential

TURKISH CUISINE

Turkish Cuisine is considered to be among the best in the world. A wide range of civilizations from history, a variety of styles, and an abundant food supply have all contributed to today's Turkish cuisine. It is a fusion and refinement of Central Asian, Middle Eastern, Mediterranean, Eastern European and Balkan cuisines.

Afiyet olsun! "Afiyet olsun!" is an expression used to wish for a meal to be enjoyed. The expression is used both before and after the meal.
Elinize sağlık! When someone wants to express appreciation about food prepared by someone else, he or she says "Elinize sağlık!" which means "Health to your hands!"
Serefe! When proposing a toast, the expression "Serefe!" is used, which literally means "to your honor!"

TURKISH BREAKFAST

You can eat breakfast in every country in the world and not find anything that compares with a Turkish breakfast. The Turkish word for breakfast is "kahvaltı" and it means "before coffee". It is the food you eat before drinking coffee, since Turks traditionally never drink coffee with breakfast, as it is drunk only after breakfast.

Breakfasts in Turkey are never the same, however a typical Turkish breakfast consists of a variety of cheeses, jams, olives, butter, eggs, tomatoes, cucumbers, peppers, fruits, honey (sometimes in the honeycomb), kaymak, tahini-pekmez, sucuk, pastırma, sun-dried figs and apricots, walnuts, hazelnuts, almonds, börek, simit, gözleme, and cup after cup of black tea in tulip-shaped glasses. Soups or variations of börek are also common as morning meals in Turkey.



ÇORBACI - SOUP RESTAURANTS

Some soup restaurants are available for breakfast from morning hours, while others are open all day long or even after midnight. Most common soups are lentil, yayla and tarhana.

Tarhana is one of the oldest known instant soups. In the summer months, yogurt, flour, vegetables, and herbs are mixed and fermented. Then it is dried and powdered by hand. During the winter, it is cooked by adding water and other ingredients. **Yayla Çorba** is a yogurt soup cooked with mint and rice. Sometimes melted butter is poured over the dish.

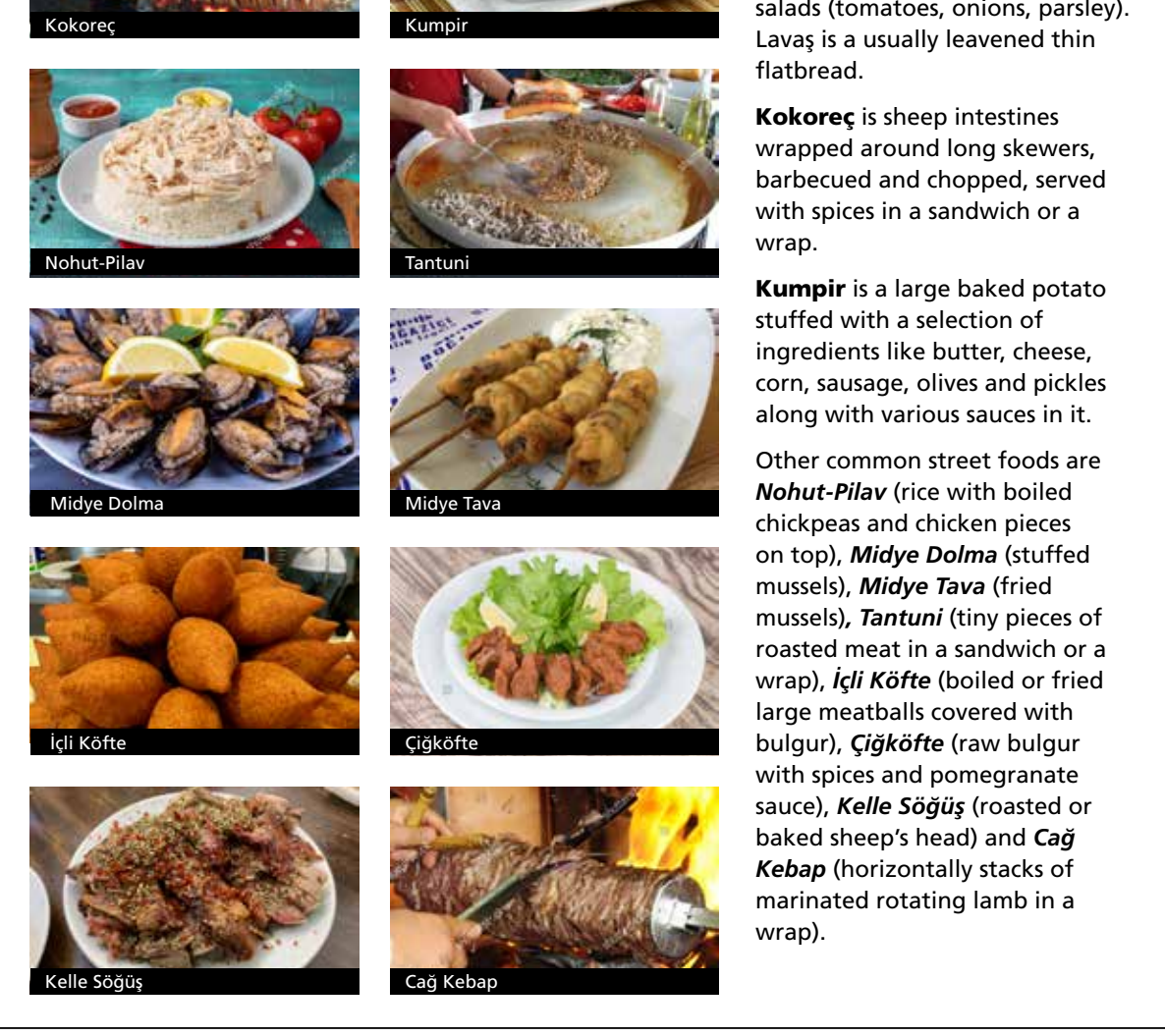


SAKATAT (OFFAL), TURKISH CUISINE

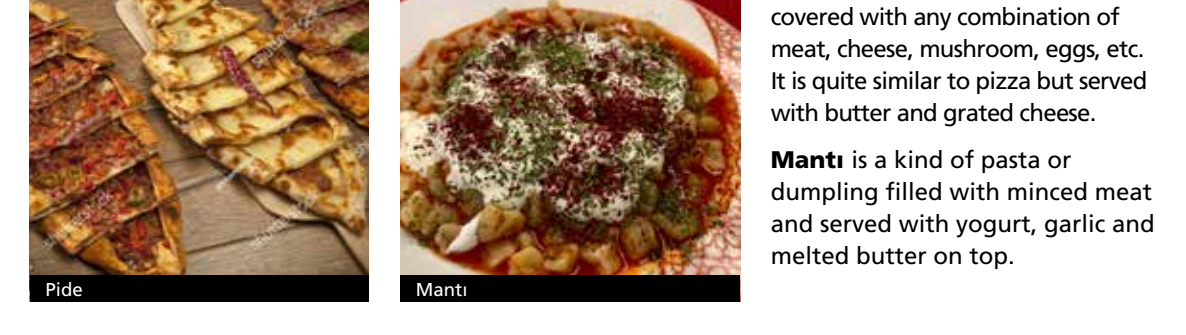
Like many other cuisines around the world, does not waste any part of an animal. On the contrary, offal plays an important role in several Turkish dishes, with tripe, head, feet, brain, tongue, intestines and liver being among the most common. Specialty soup restaurants serve soup from *kelle* (sheep head), *paça* (sheep leg), *beyin* (brain) or *ışkembe* (tripe).



STREET FOOD



PİDE OR MANTI RESTAURANTS



BOSPHORUS EUROPEAN SIDE (RUMELİ)

- 1. Theodosius II Walls
- 2. Aqueduct of Valens
- 3. Bayezid Tower
- 4. Grand Bazaar
- 5. Blue Mosque (Sultan Ahmet Mosque)
- 6. Hagia Sophia
- 7. Topkapı Palace Museum
- 8. Private Bosphorus Boats
- 9. TURVU Boats
- 10. "Boğaziçi Özel Gezi" Public Boats
- 11. Galata Tower (Galata Kulesi)
- 12. Terminal for Cruise Ships
- 13. Kılıç Ali Pasha Mosque
- 14. Tophane Fountain
- 15. Nusretye Mosque
- 16. Istanbul Modern Museum
- 17. Fine Arts Academy of Architect Sinan
- 18. Emirgan Mosque
- 19. Sabancı Museum
- 20. Dolmabahçe Mosque
- 21. İnönü (Beşiktaş) Soccer Stadium
- 22. Dolmabahçe Clock Tower
- 23. Dolmabahçe Palace
- 24. Swissotel The Bosphorus
- 25. Maritime Museum
- 26. Democracy Monument
- 27. Conrad Hilton Hotel



ASIAN SIDE (ANADOLU)

- 27. Four Seasons Hotel
- 28. Çırağan Palace
- 29. Yıldız Park
- 30. Ortaköy Mosque
- 31. Esmâ Sultan Yalı
- 32. Gazi Osman Pasha Yalı
- 33. Naile Sultan Yalı
- 34. Kırmızı (Red) Yalı
- 35. Galatasaray Island (Sport Club)
- 36. Residence of Egyptian Consulate General
- 37. Bebek Mosque
- 38. Bosphorus University Campus
- 39. Rumeli Fortress (Rumeli Hisarı)
- 40. Perili Köşk - Borsan Contemporary
- 41. Zeki Pasha Yalı
- 42. Baltalimanı Hospital
- 43. Seriferi Yalı
- 44. Emirgan Mosque
- 45. Sabancı Museum
- 46. Müjri Deli Fuad Pasha Yalı
- 47. Çaycı İstaplan Yalı
- 48. Prince Burhanettin Efendi Yalı
- 49. Salt Halim Pasha Yalı
- 50. Kalender Pavilion
- 51. Huber Pavilion
- 52. German Embassy Summer Residence
- 53. Tarabya Hotel
- 54. Italian Embassy Summer Residence
- 55. İpsilanti Yalı
- 56. Surp Hripsimants Armenian Church
- 57. Spanish Embassy Summer Residence
- 58. Sadberk Hanım Museum
- 59. Sarıyer Police Station (Navy Clubhouse)
- 60. Garipçe Fortress
- 61. Rumeli Lighthouse



ASIAN SIDE (ANADOLU)

- 62. Anatolian Lighthouse
- 63. Poyraz Fortress
- 64. Genoese (Yoros) Castle
- 65. Marko Pasha Pavilion
- 66. Osman Hamdi Bey Yalı
- 67. Khedive Pavilion (Hıdiv Kasrı)
- 68. Sadrazam Kadı Pasha Yalı
- 69. Hekimbaşı Salih Efendi Yalı
- 70. Amcazade Hüseyin Pasha Yalı
- 71. Zahir Mustafa Pasha Yalı
- 72. Anadolu Fortres (Anadolu Hisarı)
- 73. Komodor Remzi Bey (İnönü) Yalı
- 74. Küçüksu (Göksu) Pavilion
- 75. Hüner Pavilion
- 76. German Embassy Summer Residence
- 77. Tarabya Hotel
- 78. Count Ostroff Yalı
- 79. Edip Efendi Yalı
- 80. Rezaizade Ekrem Bey Yalı



BOSPHORUS CRUISE

Bosphorus Cruise Choices:

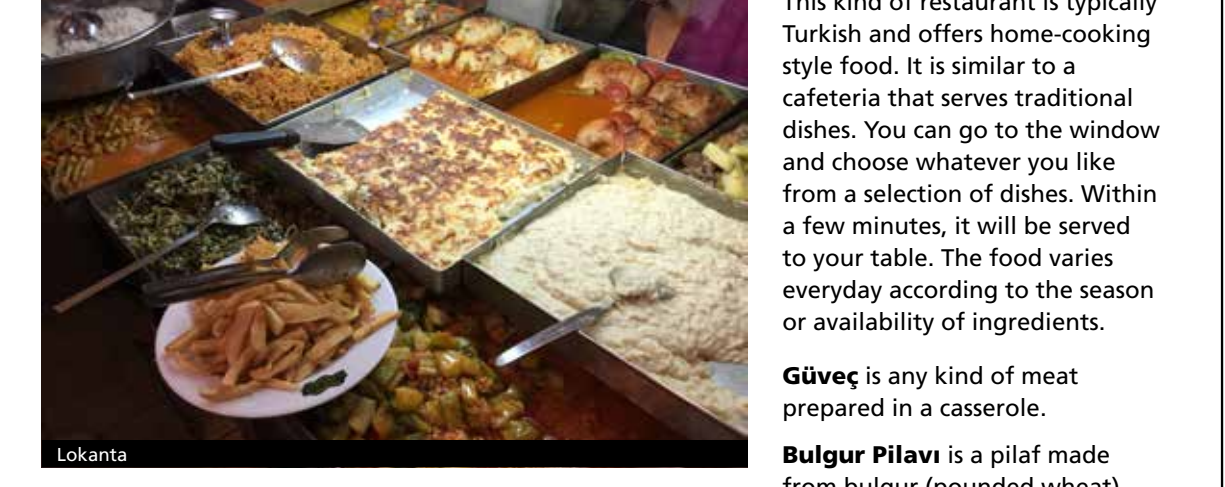
- 1. Private Boats/Yachts:** These are unique experiences combining privacy, luxury and personalized services. You can check availability and prices with your hotel or travel agent.
- 2. Regular Tour Boats:** They pick you up from your hotel, give you a ride and bring you back to your hotel. There is a guide on board giving commentary. These are more expensive than the public boats and less expensive than private yachts. You can check availability with your hotel or travel agent.
- 3. Public Boats:** You can take a Bosphorus Cruises by public boats. It will be very reasonably priced. The only problem is that these boats are generally overcrowded.
- 4. Valide Sultan Boat:** You can take the public boat called "Boğaziçi Özel Gezi" with the traditional public boats from Eminönü. It departs at 10:35 AM (also at 1:35 PM in summer) and stops at the piers of Beşiktaş, Kankıca, Yeniköy, Sarıyer and Rumeli Kavağı before arriving at Anadolu Kavağı on the Asian side close to the Black Sea. This ride will take approximately one and a half hours. After about three hours of free time, it departs at 3:00 PM (also at 5:00 PM in summer from Anadolu Kavağı). In addition, in summer months, two-hour nonstop short tours are available from the same pier. They depart at 11:30 AM, 02:30 PM and 03:30 PM.

Check departure times online or at the Şehir Hatları Bosphorus Lines.

Check departure times online or at the Şehir Hatları Bosphorus Lines.

Check departure times online or at the Şehir Hatları Bosphorus Lines.

LOKANTA



This kind of restaurant is typically Turkish and offers home-cooking style food. It is similar to a cafeteria that serves traditional dishes. You can go to the window and choose whatever you like from a selection of dishes. Within a few minutes, it will be served to your table. The food varies everyday according to the season or availability of ingredients.

Güvec is any kind of meat prepared in a casserole.

Bulgur Pilavı is a pilaf made from bulgur (pounded wheat).

Dolma (stuffed vegetables) is usually made from vine leaves, cabbage leaves, chard leaves, peppers, eggplants, tomatoes, squash or mussels filled with rice, minced meat and raisins.

Hünkar Beğendi is Sultan's delight. It is simply chopped lamb pieces served on eggplant puree.

Musakka is a very typical eggplant dish with ground meat and tomato sauce.

Musuryank is stuffed eggplant. Variations of meatballs, vegetables, offals, meat or liver are also common traditional Turkish dishes.

KEBABÇI

This is the place where kebabs are sold. Kebab (kebab) is roasted, broiled or grilled meat prepared in many different ways: Döner Kebab, Iskender Kebab, Şiş Kebab, Patlican Kebab, Adana Kebab, Urfa Kebab, Ali Nazik Kebab and so on.

İskender Kebab is named for the chef who created the dish in Bursa. The dish consists of döner kebab over pieces of buttered pide (pita) bread with yogurt served on the side. Tomato sauce and melted butter are poured over the dish at the table once it is served.

Şiş Kebab is cubes of grilled marinated chicken or lamb meat on skewers.

Adana Kebab is spicy barbecued minced meat mounted on a wide skewer. This is ground lamb meat that is mixed with fat from lamb's tail. **Urfa Kebab** is very similar, but it is not as spicy.

Ali Nazik is eggplant puree in garlic yogurt with spicy barbecued minced meat on top.

Lahmacun is thin round dough covered with a spicy mixture of minced lamb meat, onions, tomatoes and parsley, and then baked in an oven.

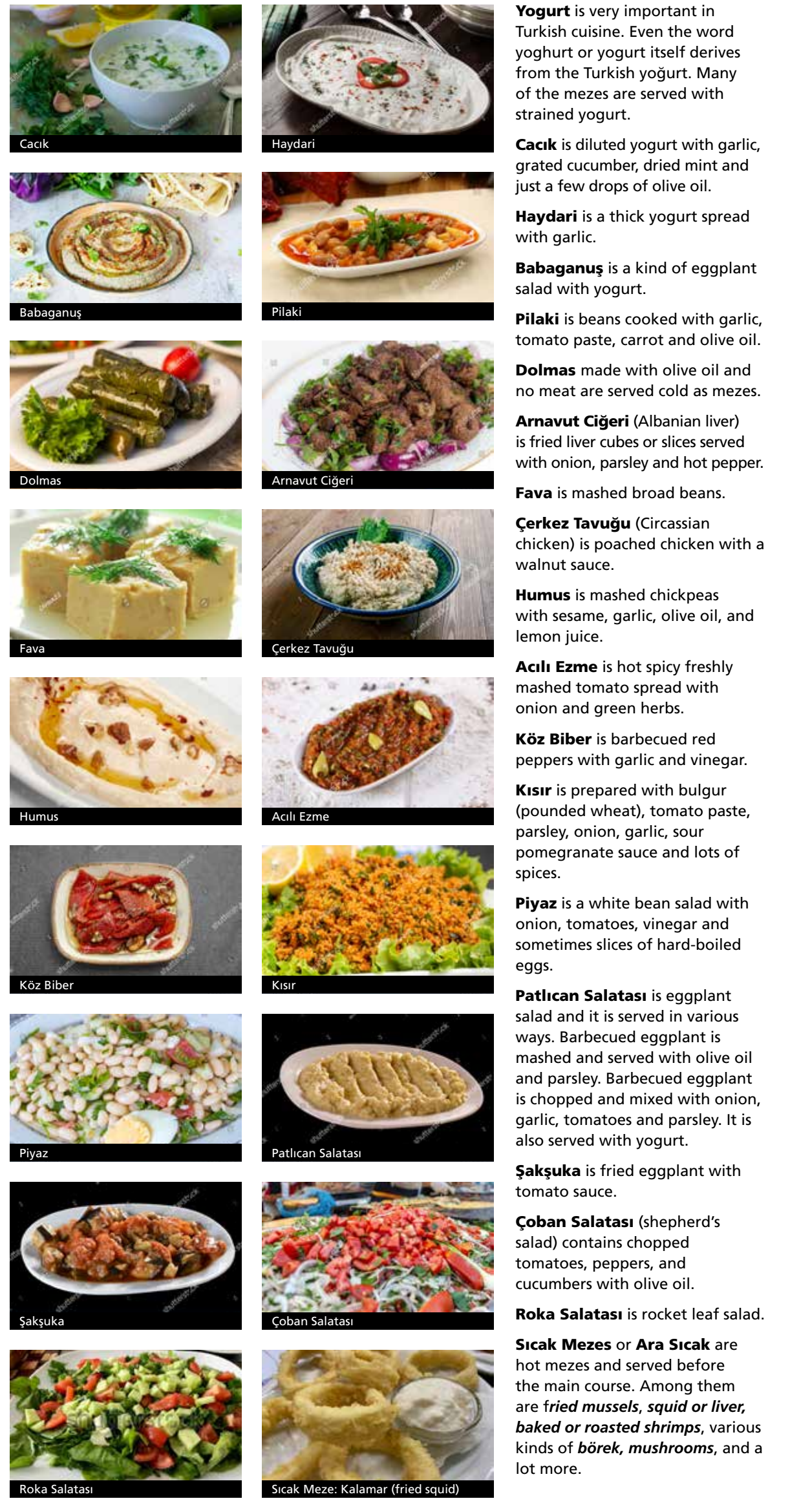
KÖFTEÇİ

Köfte is grilled or fried meatballs. Almost every city or region in Turkey has its own version of meatballs, such as İnegöl Köfte, Balaban Köfte, İslama Köfte, Tekirdağ Köfte, Odemış Köftesi, etc.

MEYHANE & FISH RESTAURANTS

A meyhane is a traditional Turkish tavern, which serves food with alcohol. Raki is the typical drink at a meyhane. Many fish restaurants serve dinner with alcohol. In either one, first a large variety of soğuk meze (cold appetizer) are offered on a big tray from which you can choose quite a few for the table, then you should sample a few sıcak (hot) mezes before the main dish. The main dish will be either fish or meat. After having dessert or fruit, as the locals do, it is time to drink a cup of Turkish coffee.

Among the local fish choices from the Bosphorus are *istavrit* (horse mackerel), *hamsi* (anchovy), *palamut* (bonito), *levrek* (bluefish) and *kalkan* (turbot). *Cıprı* (sea bream) and *levrek* (sea bass) are commonly found everywhere.



TATLICI - CONFECTIONERY

This is a place where they sell different kinds of sweets. Many of them specialize in certain groups of sweets like baklava, mullabeyli, dondurmacı, helvacı, and so on.

Baklava is thin layers of flaky pastry stuffed with almond paste, walnuts or pistachio nuts in syrup. Its name comes from the shape in which it is cut; lozenge-shapes.

Kadayıf is shredded wheat in syrup. Similar to Kadayıf, **Künefe** is shredded wheat filled with cheese and served hot.

Dough-based desserts are Ekmek Kadayıfı, Revani (with semolina and starch), Şekerpare, Kalburabasma, Dilber Duduğu, Vezir Parmığı, Hanım Böğöğü, Kemalpaşa and Tulumba. They are all served with syrup.

Kaymak with honey or jam. It is often served with rich desserts (baklava, künefe, etc) to cut through their sweetness.

Sütlüç is rice pudding.

Tavuk Göğüsü (chicken breast) is a thick milk pudding. In which thin sliced chicken breast is added to give it a chewy texture.

Kazandibi is a milk pudding with a burnt surface.

Agune, also known as Noah's Pudding, is made from numerous (some 40) types of dried fruits and raisins.

Ayva Tatlısı (quince dessert) is made by baking or cooking quince halves in sweet syrup. Quince halves are filled with cloves and quince meal. It is served with kaymak on top.

Kabak Tatlısı (pumpkin dessert) is made by baking or cooking sliced pumpkin with sugar sprinkled on top. The dish is topped with crushed walnuts, tahini or kaymak.

Hoşaf is a dessert made of dried Turkish ice cream. It was named after the like raisins, dried prunes, apricots, or figs boiled in water with some sugar and left to cool.

Kestane Sekeri is glacé chestnuts (candied chestnuts).

Pısmırsıya is a sweet-meat made of sugar, flour and butter which resembles flax fibers.

Tahini-Pekmez is a mixture of both tahini (sesame oil) and pekmez (grape molasses).

Helva is a flaky confection of crushed sesame seeds in a base of syrup.

Maras Dondurması is a unique Turkish ice cream. It was named after the southeastern Turkish city of Maras (Kahramanmaraş). It is thickened and enriched with "salep", which consisted of ground wild orchid root. This ice cream is beaten with a paddle. You can cut it with a knife.

TURKISH DRINKS

Cay-Tea

The major hot drink for breakfasts, after or in-between meals, in social gatherings or formal business meetings is always tea. Turks have one of the highest consumption rates of tea in the world. Tea is widely grown in Turkey along the Eastern Black Sea coast.

Teahouses or tea gardens are abundant and can be found throughout the country. Turkish people mostly use loose tea and brew the tea by using two pots, one on top of the other. The lower teapot is for boiling water and the top one is for steeping the loose tea with less water. While serving the tea in the small tulip-shaped traditional glasses, you will mix the tea according to your taste. If you like it strong, you will add more from the top pot.

Turkish Coffee

Coffee beans are roasted, left to cool in a bowl, ground in a brass coffee mill, and with the fresh aroma of coffee, poured into the coffee jar. The process continues by making coffee in a little copper pot with a long handle on the brazier or a stove, and finally drunk from a small porcelain cup. The more foam is on the surface of the coffee cup, the more it will be appreciated. According to a Turkish proverb "A cup of coffee guarantees 40 years of friendship" you can never forget a sincere and hospitable offer of a cup of rich, bitter Turkish coffee.

Turkish coffee is more like a ritual than just a drink. Although coffee is not grown in Turkey, it was the Turks who first popularized it, then introduced it to the western world during the Siege of Vienna in the 17th century.

Together with your order, you should place your wish in advance about how much sugar you like in your coffee: **sade** (without sugar), **az şekerli** (a little sugar), **orta** (medium sugar), or **çok şekerli** (with a lot of sugar).

Beer

It is argued that the first beer in Anatolia was brewed at the time of the Hittites around 3500 years ago.

The largest producer of beer in Turkey is the Efes Beverage Group, with approximately 80% of the market share. Their main product line is called Efes Pilsen. The name Efes is the modern version of the name of the ancient city of Ephesus, as the brewery is close to Ephesus. The beer is described as having a "tangy malt and hops aroma, rich malt, and a bitter-sweet finish that becomes dry and hoppy".

In addition to Efes Pilsen, Efes Beverage Group brews Efes Light, Efes Dark, Efes Extra, Bomonti and Marmara. They brew a few other foreign brands under license too.

Tuborg is also brewed in Turkey under license. The craft beer movement has come to Turkey with small companies producing limited-production brews with unique flavors such as Gara Guzu and Zikim.

Similar to buttermilk, Ayran is a refreshing tangy drink of yogurt, water and salt whipped together. It is served cold, and it's a very common health drink.

Tuborg is also brewed in Turkey under license. The craft beer movement has come to Turkey with small companies producing limited-production brews with unique flavors such as Gara Guzu and Zikim.

www.serifyenen.com
Published by Serif Yenen Publishing (Serif Yenen) www.serifyenen.com
Copyright © 2020, Serif Yenen
Written by Serif Yenen
Designed by Serif Yenen
Illustrations by Cemil Çankaya